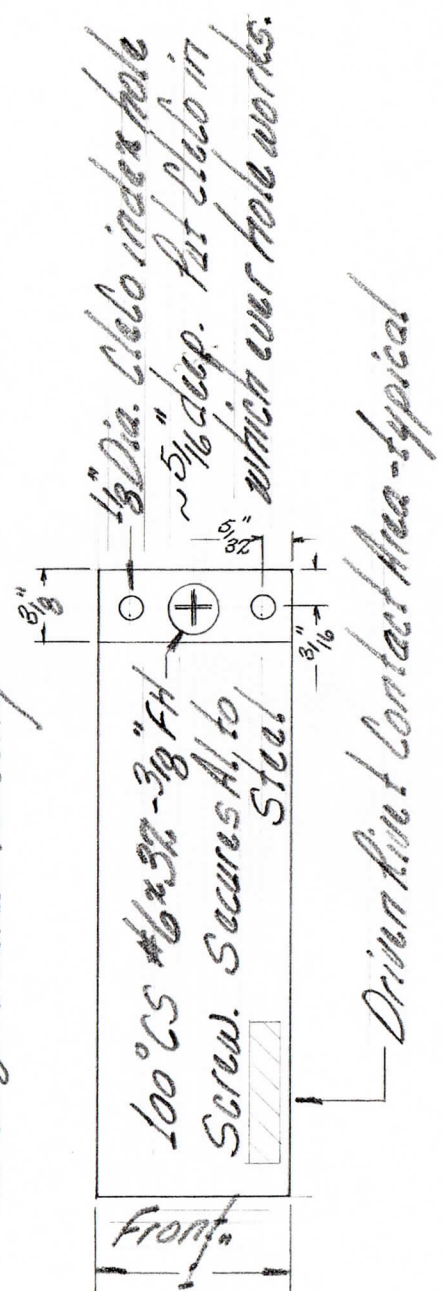


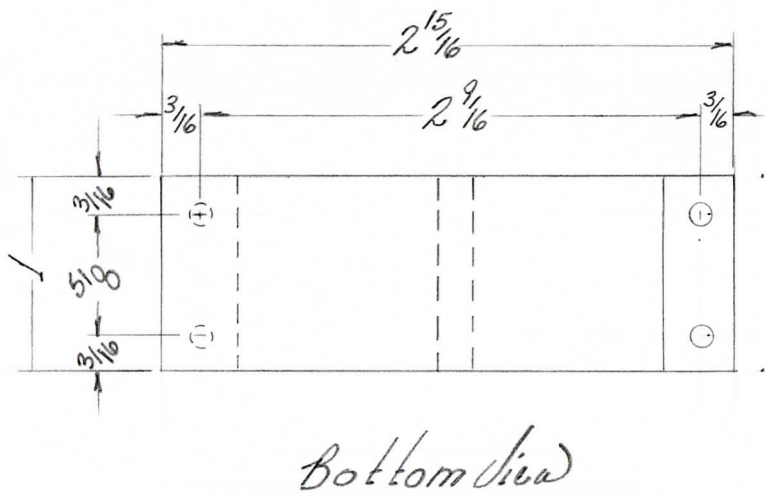
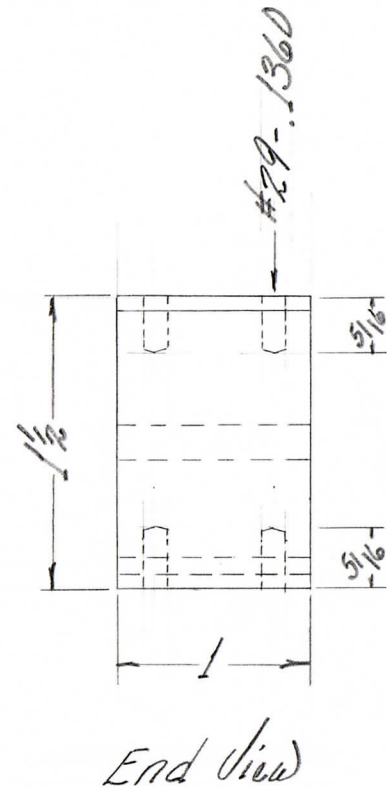
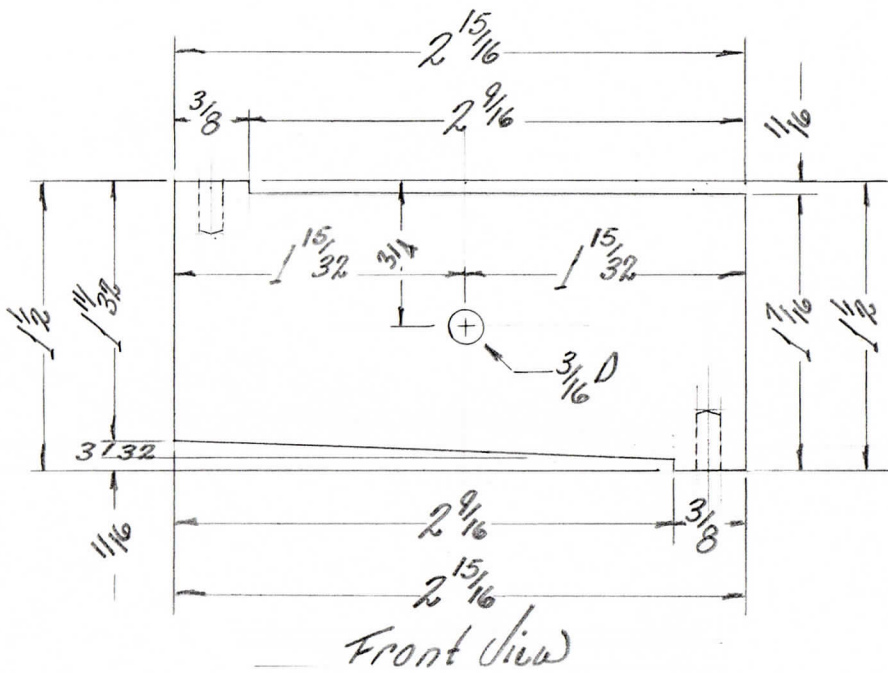
\*For wing I also make 1 ea. at 2 3/8" & 1 ea. at 2" long



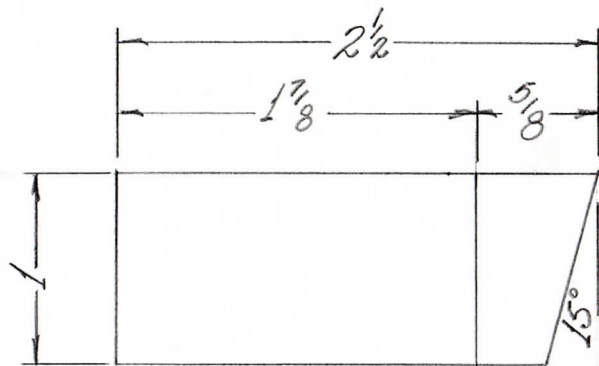
After positioning bar over index cleco, push bar against rib web & then against rivet. Drive rivet.

Bucking Bar-Wing  
PA 95-102

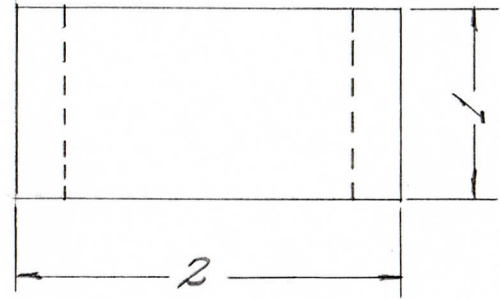




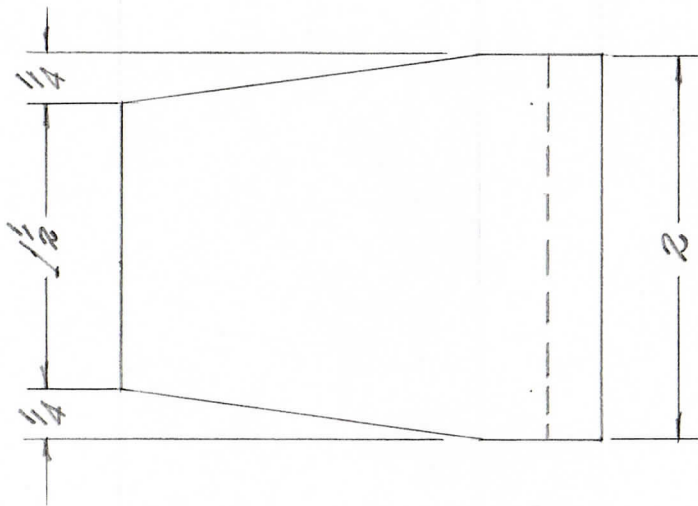
E Z Buck II Tungsten Bar		
3-13-10		(Howe)
F.S.		HFS 10-05



Side



Front



Top

Custom Tungsten Bucking Bar		
F.B.		(Howe)
9-1-15		HFS 15-10